

TROMBONE POSITION CHART

The number indicates what position to use.

+ = Slightly extend the slide.

- = Slightly shorten the slide.

E	F \flat	E \sharp	F	F \sharp	G \flat	G
7		6		5		4

G \sharp	A \flat	A	A \sharp	B \flat	B	C \flat
3		2		1		7

B \sharp	C	C \sharp	D \flat	D	D \sharp	E \flat
6		5		4		3

E	F \flat	E \sharp	F	F \sharp	G \flat	G
2		1 or 6		5		4

G \sharp	A \flat	A	A \sharp	B \flat	B	C \flat	B \sharp	C
3		2 or 6		1		4		3

C \sharp	D \flat	D	D \sharp	E \flat	E	F \flat	E \sharp	F
2		1 or -4		3		2		1

FOR THE FULL BAND

**BASS
CLEF**

**TIME
SIGNATURE**

**WHOLE
NOTE**

**WHOLE
REST**


Ledger Line

Bar Lines

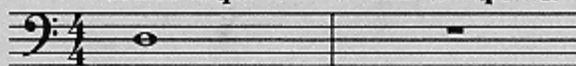
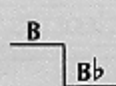
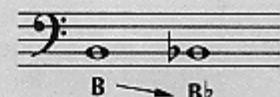
Staff

Measures

$\frac{4}{4}$ = 4 counts in each measure

A whole note gets 4 counts in $\frac{4}{4}$ time.

A whole rest gets 4 counts in $\frac{4}{4}$ time.


FLAT


A flat (b) lowers the pitch of a note one half step. It remains in effect for the entire measure.

1 TIME FOR BAND

D

The number indicates what position to use.

▶ A double bar line marks the end of the music.

2 THE FUN CONTINUES

C

3 WHOLE LOTTA COUNTING

▶ Write in the counting and clap the rhythm before you play.

4 FOUR SCORE

Page 39

B flat (Bb)

Bb

▶ When you see a page number followed by an arrow, *Excellerate* to the page indicated for additional studies.

5 MIX 'EM UP

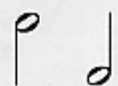
6 MELTING POT

7 BAND ON PARADE



▶ Lines with a medal are *Achievement Lines*. The chart on page 47 can be used to record your progress.

HALF NOTE



HALF REST

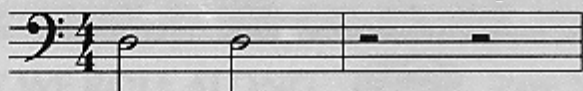


BREATH MARK

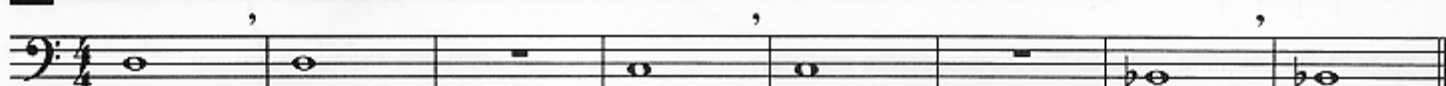


Each half note gets
2 counts in $\frac{4}{4}$ time.

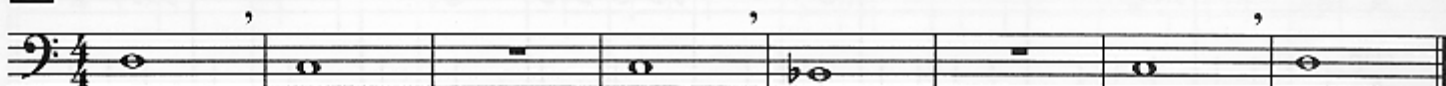
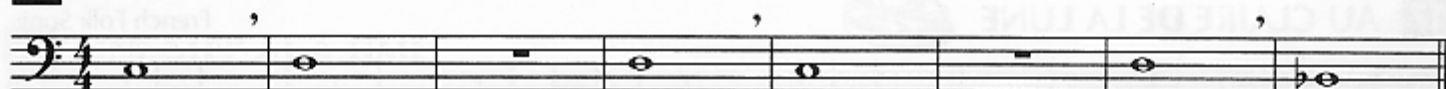
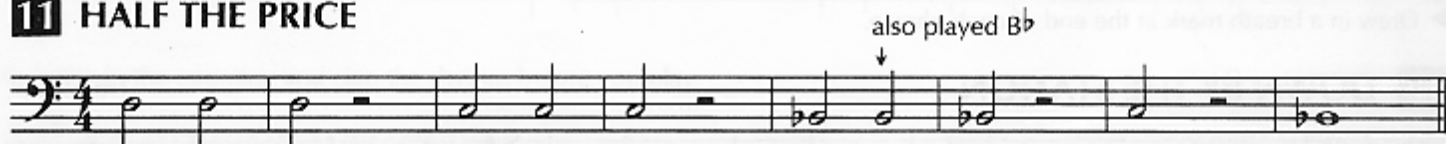
Each half rest gets
2 counts in $\frac{4}{4}$ time.



Take a breath.

8 A BREATH OF FRESH AIR

► Be sure to take a full breath of air.

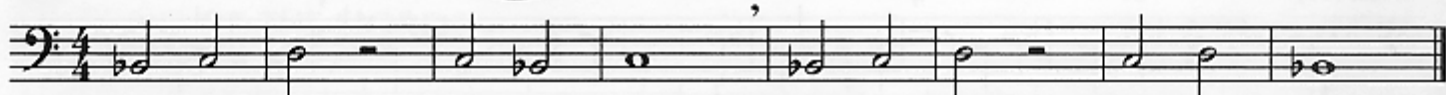
9 SIDE BY SIDE**10** TWO BY TWO**11** HALF THE PRICE

► Write in the counting and clap the rhythm before you play.

12 CARDIFF BY THE SEA

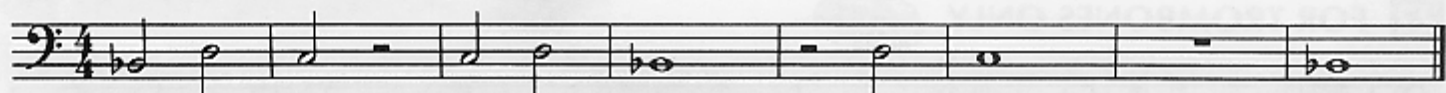
Page 39

Welsh Folk Song

**13** TWO FOR THE SHOW - Duet

A.

B.

14 GO FOR EXCELLENCE!

QUARTER NOTE



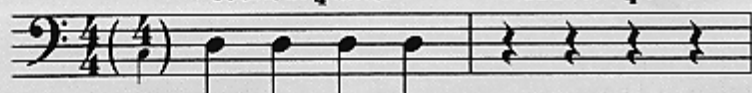
QUARTER REST



PHRASE

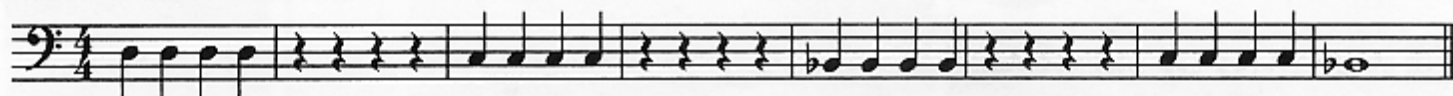
Each quarter note gets
1 count in $\frac{4}{4}$ time.

Each quarter rest gets
1 count in $\frac{4}{4}$ time.



A phrase is a musical thought or sentence. Phrases are usually four or eight measures long.

15 A QUARTER'S WORTH



► Write in the counting and clap the rhythm before you play.

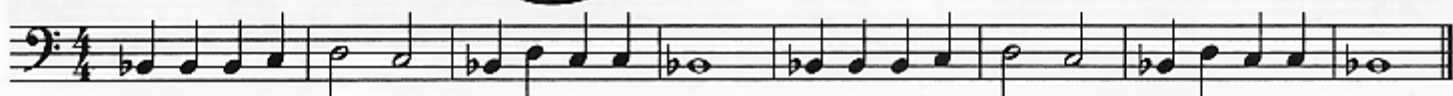
16 HOT CROSS BUNS

English Folk Song

17 AU CLAIRE DE LA LUNE



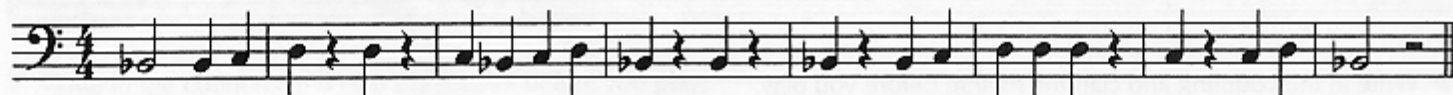
French Folk Song



► Draw in a breath mark at the end of each phrase.

18 DOWN BY THE STATION

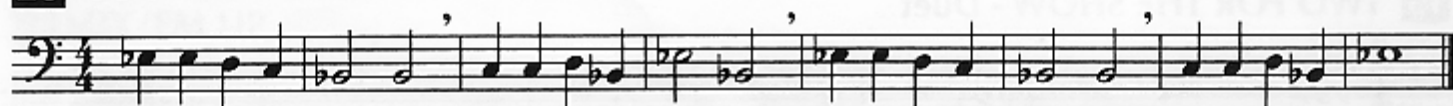
Traditional



19 EASY STREET

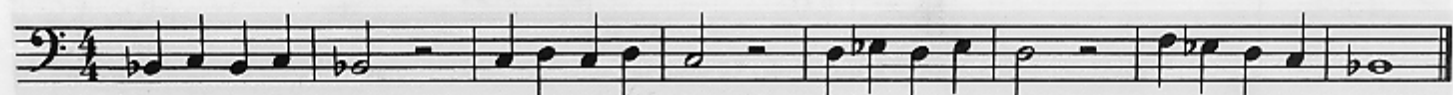
20 COUNTRY WALK

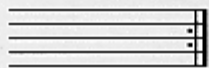


English Folk Song





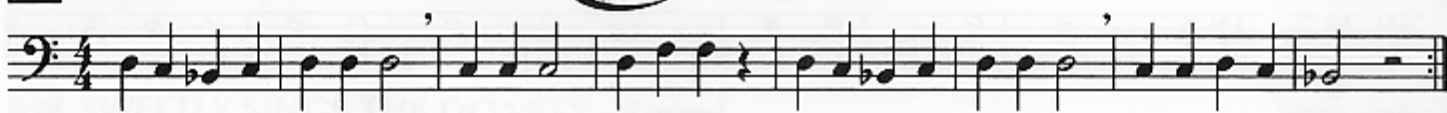
21 GETTIN' IT TOGETHER

22 FOR TROMBONES ONLY



REPEAT SIGN	COMMON TIME	FERMATA	SOLO	One person plays.
			SOLI	Whole section plays.
Repeat from the beginning.	$C = \frac{4}{4}$ Common time means the same as $\frac{4}{4}$ time.	Hold the note or rest longer than its usual value.	TUTTI	Everyone plays.

23 MERRILY WE ROLL ALONG  Page 39  Traditional



► Write in the note names before you play.

24 LIGHTLY ROW - Duet Traditional

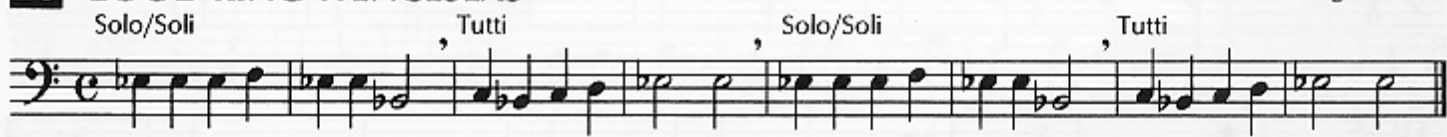


25 ONE STEP AT A TIME

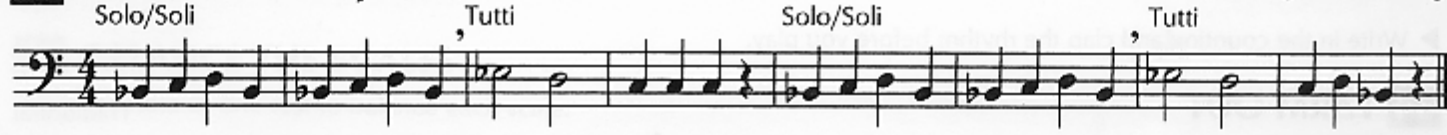


► Write in the counting and clap the rhythm before you play.

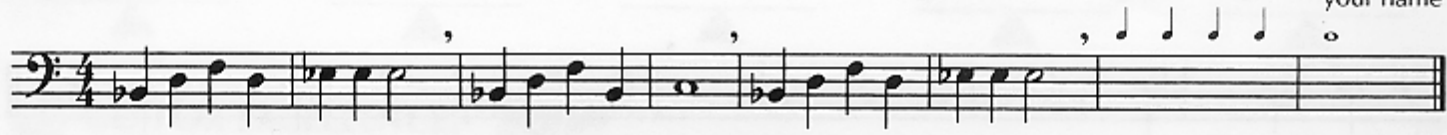
26 GOOD KING WENCESLAS Traditional English Carol




27 SONG OF THE FJORDS Norwegian Folk Song

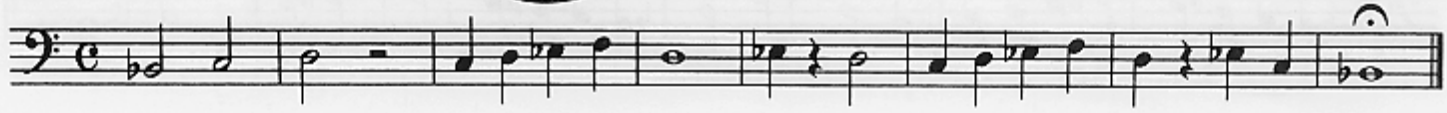


28 _____ Composer _____ your name

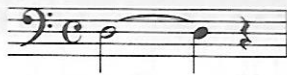


► Fill in the rest of the measures using the given rhythms and any notes you know. Title and play your composition.

29 GO FOR EXCELLENCE! 



TIE

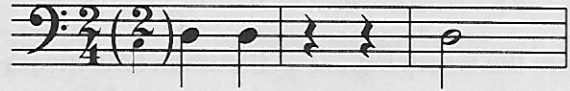


A tie is a curved line that connects two notes of the same pitch. Tied notes are played as one unbroken note.

TIME SIGNATURE

$\frac{2}{4}$

$\frac{2}{4}$ = 2 counts in each measure
 $\frac{2}{4}$ = quarter note gets one count



30 WARM-UP



► Try playing this warm-up on your mouthpiece.

31 TIED AND TRUE



32 JOLLY OLD ST. NICHOLAS - Duet

American Carol



33 AMIGOS

Mexican Folk Song



► Keep on playing!

► Write in the counting and clap the rhythm before you play.

34 FARM OUT

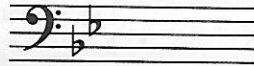
Traditional



35 FOR TROMBONES ONLY

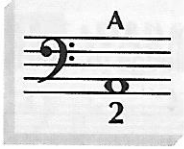


KEY SIGNATURE



Key signatures change certain notes throughout a piece of music. This key signature means play all B's as B flats and all E's as E flats.

36 MARK TIME



37 SWEETLY SINGS THE DONKEY - Round

Traditional



38 MARY ANN

West Indies Folk Song



► Write in the note names before you play.

39 CRUSADER'S MARCH



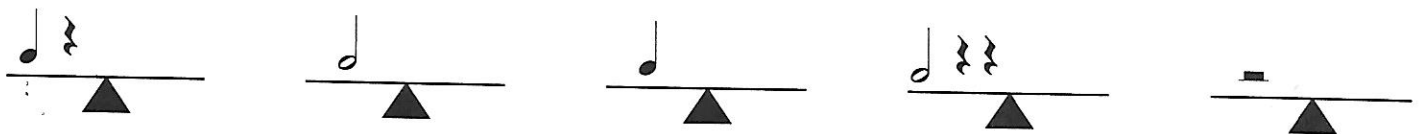
Traditional



► Write in the counting and clap the rhythm before you play.

40 BALANCE THE SCALES

Draw one note or one rest to balance each scale.



41 GO FOR EXCELLENCE!

