

B \flat TRUMPET/CORNET FINGERING CHART

The numbers indicate which valves should be pressed down.

0 = No valves pressed down

F \sharp	G \flat	G	G \sharp	A \flat	A
1 2 3		1 3	2 3		1 2

A \sharp	B \flat	B	C \flat	B \sharp	C	C \sharp	D \flat
1		2		0		1 2 3	

D	D \sharp	E \flat	E	F \flat	E \sharp	F
1 3		2 3		1 2		1

F \sharp	G \flat	G	G \sharp	A \flat	A
2		0	2 3		1 2

A \sharp	B \flat	B	C \flat	B \sharp	C	C \sharp	D \flat	D
1		2		0		1 2		1

D \sharp	E \flat	E	F \flat	E \sharp	F	F \sharp	G \flat	G
2		0		1		2		0

FOR THE FULL BAND

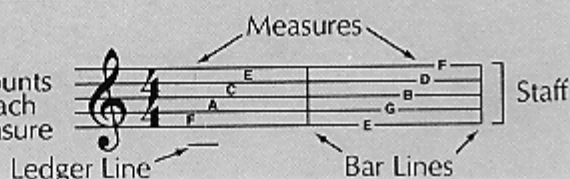
TREBLE
CLEF



TIME
SIGNATURE



$\frac{4}{4}$ = 4 counts
in each
measure



WHOLE
NOTE

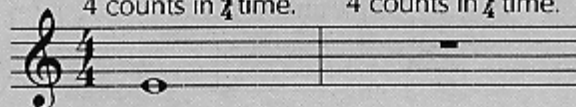


WHOLE
REST



A whole note gets
4 counts in $\frac{4}{4}$ time.

A whole rest gets
4 counts in $\frac{4}{4}$ time.



1 TIME FOR BAND

▶ A double bar line marks the end of the music.

The numbers indicate which valves should be pressed down.

2 THE FUN CONTINUES

3 WHOLE LOTTA COUNTING

▶ Write in the counting and clap the rhythm before you play.

4 FOUR SCORE

Page 39

▶ When you see a page number followed by an arrow, *Excellerate* to the page indicated for additional studies.

5 MIX 'EM UP

6 MELTING POT

7 BAND ON PARADE



▶ Lines with a medal are *Achievement Lines*. The chart on page 47 can be used to record your progress.

QUARTER NOTE



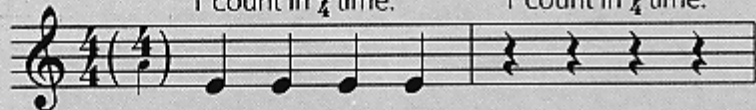
QUARTER REST



PHRASE

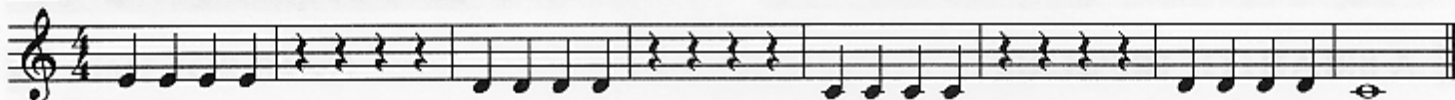
Each quarter note gets
1 count in $\frac{4}{4}$ time.

Each quarter rest gets
1 count in $\frac{4}{4}$ time.



A phrase is a musical thought or sentence. Phrases are usually four or eight measures long.

15 A QUARTER'S WORTH



► Write in the counting and clap the rhythm before you play.

16 HOT CROSS BUNS

English Folk Song



17 AU CLAIRE DE LA LUNE



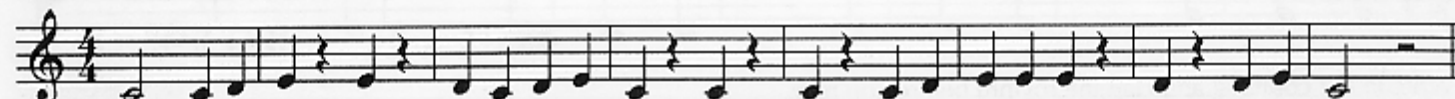
French Folk Song



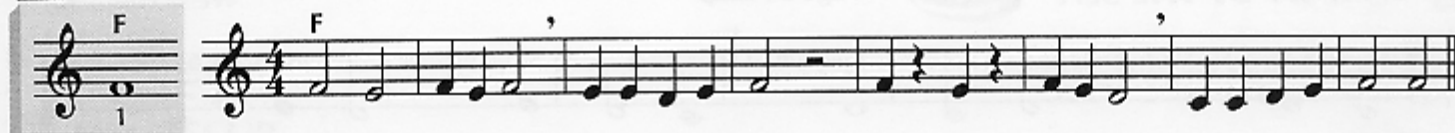
► Draw in a breath mark at the end of each phrase.

18 DOWN BY THE STATION

Traditional

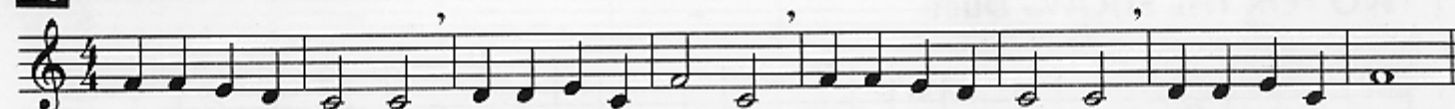


19 EASY STREET

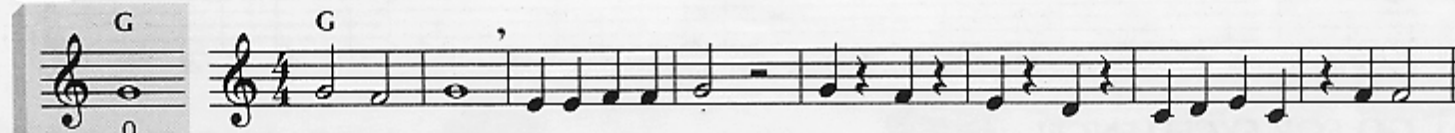


20 COUNTRY WALK

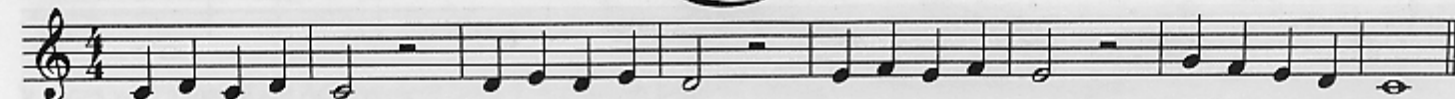
English Folk Song

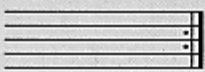






21 GETTIN' IT TOGETHER



22 FOR TRUMPETS/CORNETS ONLY



REPEAT SIGN	COMMON TIME	FERMATA	SOLO	One person plays.
			SOLI	Whole section plays.
Repeat from the beginning.	$C = \frac{4}{4}$ Common time means the same as $\frac{4}{4}$ time.	Hold the note or rest longer than its usual value.	TUTTI	Everyone plays.

23 MERRILY WE ROLL ALONG  Page 39 

Traditional



► Write in the note names before you play.

24 LIGHTLY ROW - Duet

Traditional

25 ONE STEP AT A TIME



► Write in the counting and clap the rhythm before you play.

26 GOOD KING WENCESLAS

Traditional English Carol

27 SONG OF THE FJORDS

Norwegian Folk Song

28

Composer _____ your name

► Fill in the rest of the measures using the given rhythms and any notes you know. Title and play your composition.

29 GO FOR EXCELLENCE! 

TIE

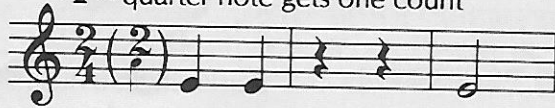


A tie is a curved line that connects two notes of the same pitch. Tied notes are played as one unbroken note.

TIME SIGNATURE

$\frac{2}{4}$

$\frac{2}{4}$ = 2 counts in each measure
 $\frac{1}{4}$ = quarter note gets one count



30 WARM-UP



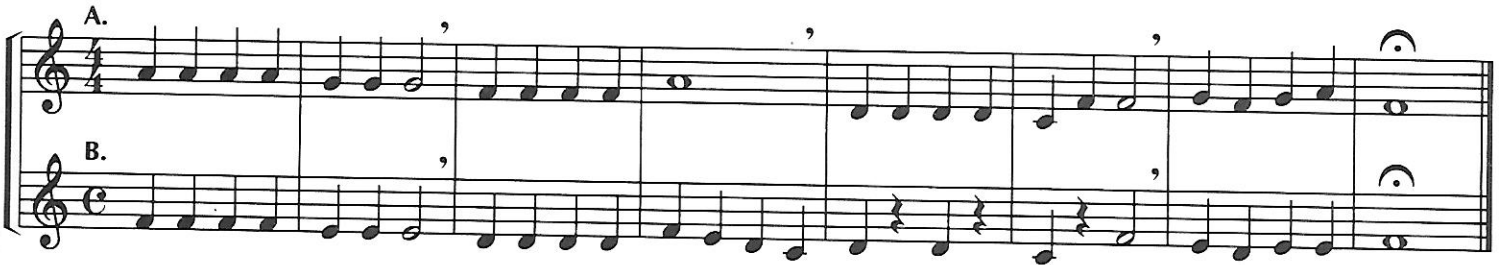
► Try playing this warm-up on your mouthpiece.

31 TIED AND TRUE



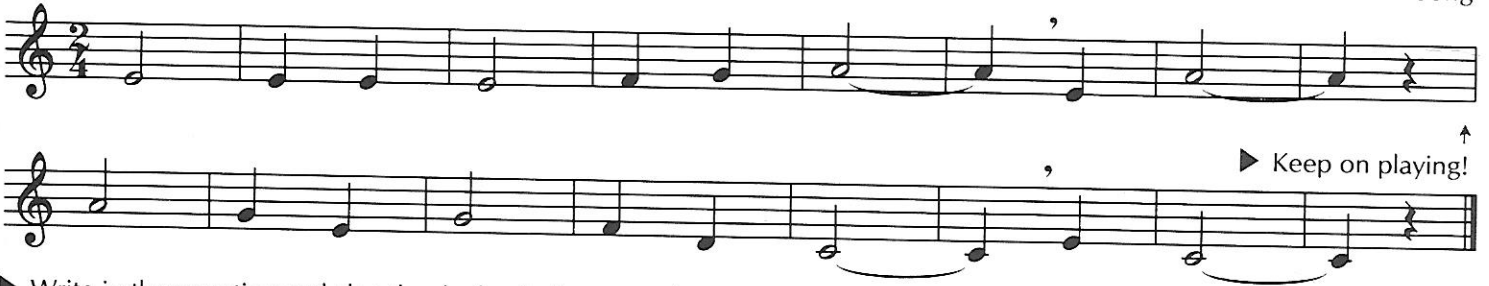
32 JOLLY OLD ST. NICHOLAS - Duet

American Carol



33 AMIGOS

Mexican Folk Song



► Write in the counting and clap the rhythm before you play.

34 FARM OUT

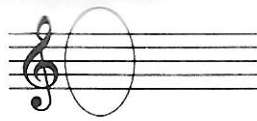
Traditional



35 FOR TRUMPETS/CORNETS ONLY



KEY SIGNATURE



Key signatures change certain notes throughout a piece of music. This is the key signature you've been playing in so far.

36 MARK TIME



37 SWEETLY SINGS THE DONKEY - Round

Traditional



38 MARY ANN

West Indies Folk Song



► Write in the note names before you play.

39 CRUSADER'S MARCH



Page 39

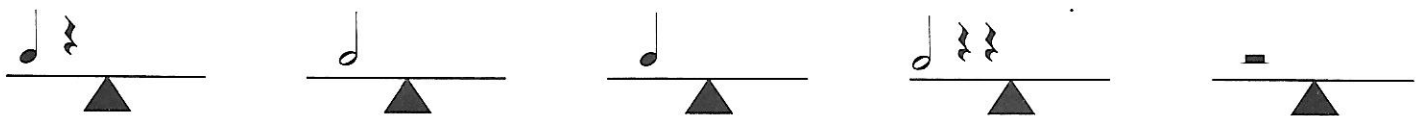
Traditional



► Write in the counting and clap the rhythm before you play.

40 BALANCE THE SCALES

Draw one note or one rest to balance each scale.



41 GO FOR EXCELLENCE!

