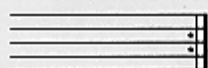


**REPEAT SIGN**

Repeat from the beginning.

**COMMON TIME**

$$C = \frac{4}{4}$$

Common time means the same as  $\frac{4}{4}$  time.

**FERMATA**

Hold the note or rest longer than its usual value.

**SOLO**

One person plays.

**SOLI**

Whole section plays.

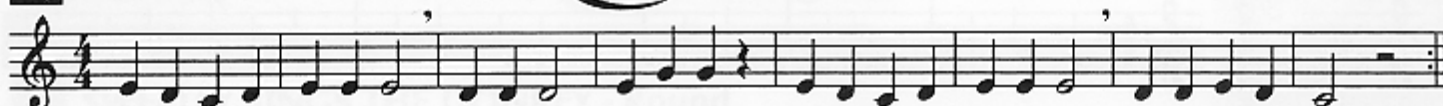
**TUTTI**

Everyone plays.

**23 MERRILY WE ROLL ALONG**

Page 39

Traditional



► Write in the note names before you play.

**24 LIGHTLY ROW - Duet**

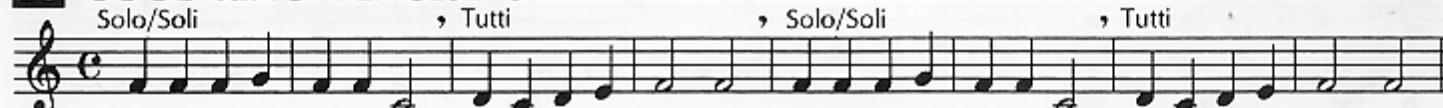
Traditional

**25 ONE STEP AT A TIME**

► Write in the counting and clap the rhythm before you play.

**26 GOOD KING WENCESLAS**

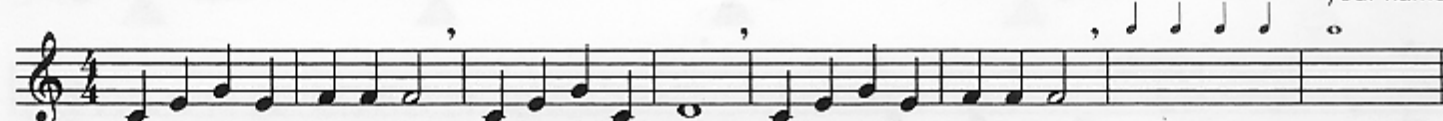
Traditional English Carol

**27 SONG OF THE FJORDS**

Norwegian Folk Song

**28**

Composer \_\_\_\_\_ your name



► Fill in the rest of the measures using the given rhythms and any notes you know. Title and play your composition.

**29 GO FOR EXCELLENCE!**