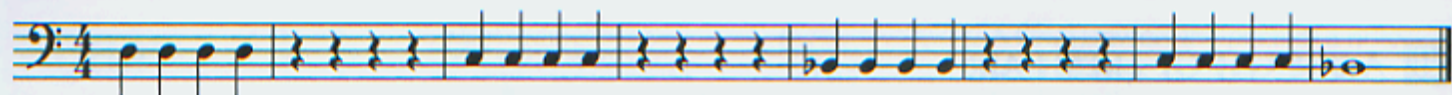
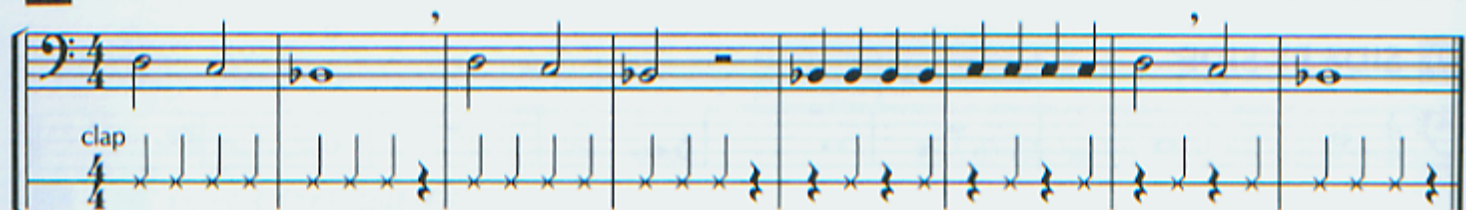


QUARTER NOTE**QUARTER REST****PHRASE**Each quarter note gets
1 count in $\frac{4}{4}$ time.Each quarter rest gets
1 count in $\frac{4}{4}$ time.A phrase is a musical thought
or sentence. Phrases are usually
four or eight measures long.**15 A QUARTER'S WORTH**

▶ Write in the counting and clap the rhythm before you play.

16 HOT CROSS BUNS

English Folk Song

**17 AU CLAIRE DE LA LUNE**

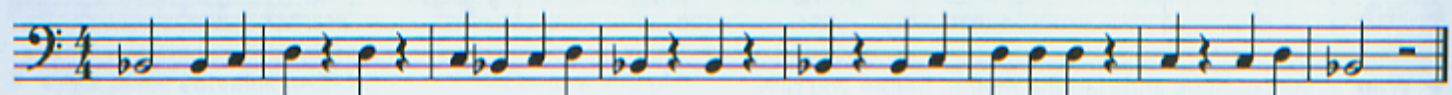
French Folk Song



▶ Draw in a breath mark at the end of each phrase.

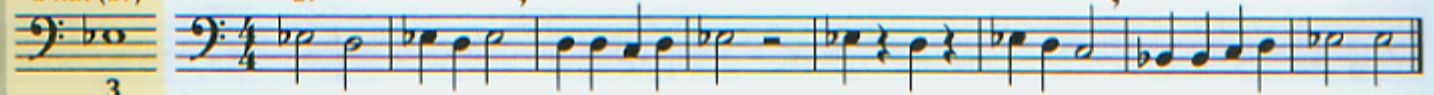
18 DOWN BY THE STATION

Traditional

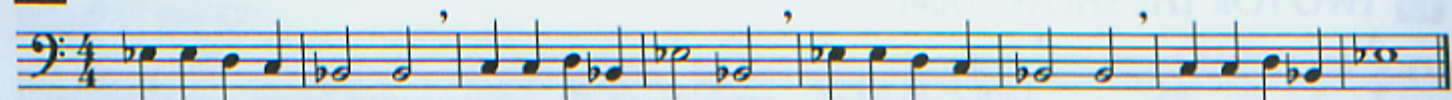
**19 EASY STREET**

E flat (Eb)

Eb

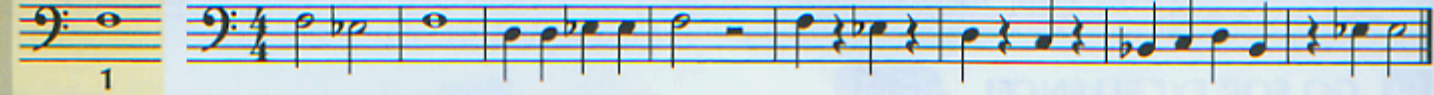
**20 COUNTRY WALK**

English Folk Song

**21 GETTIN' IT TOGETHER**

F

F

**22 FOR TROMBONES ONLY**