

REPEAT SIGN



Repeat from the beginning.

COMMON TIME



$C = \frac{4}{4}$
Common time means
the same as $\frac{4}{4}$ time.

FERMATA



Hold the note or
rest longer than
its usual value.

SOLO

One person plays.

SOLI

Whole section plays.

TUTTI

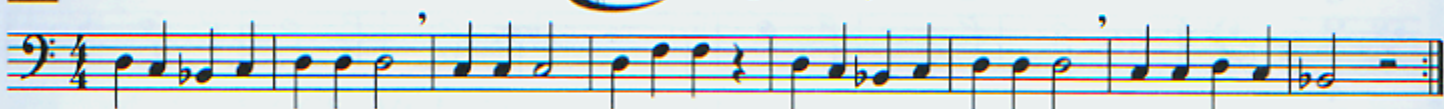
Everyone plays.

23 MERRILY WE ROLL ALONG



Page 39

Traditional



► Write in the note names before you play.

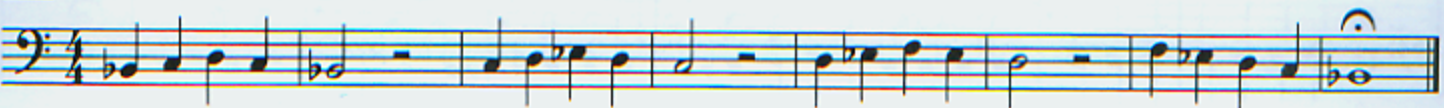
24 LIGHTLY ROW - Duet

Traditional

A.

B.

25 ONE STEP AT A TIME



► Write in the counting and clap the rhythm before you play.

26 GOOD KING WENCESLAS

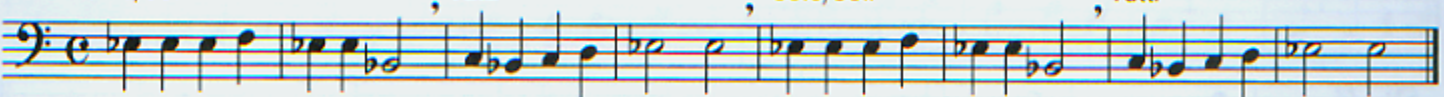
Traditional English Carol

Solo/Soli

Tutti

Solo/Soli

Tutti



27 SONG OF THE FJORDS

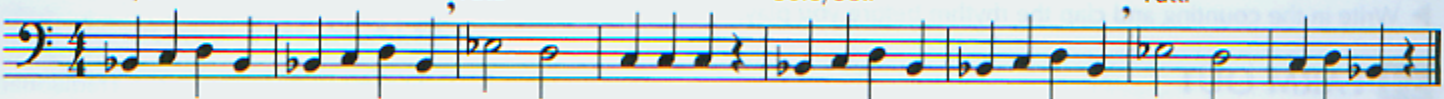
Norwegian Folk Song

Solo/Soli

Tutti

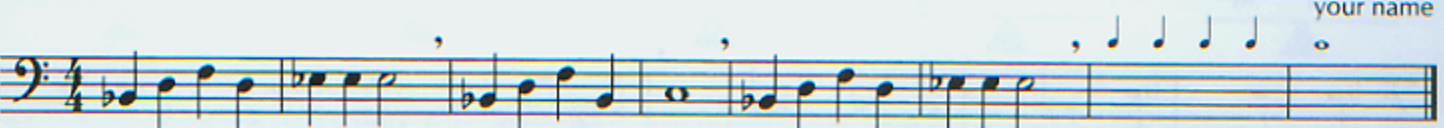
Solo/Soli

Tutti



28 _____

Composer _____
your name



► Fill in the rest of the measures using the given rhythms and any notes you know. Title and play your composition.

29 GO FOR EXCELLENCE!

