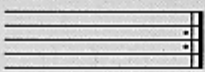




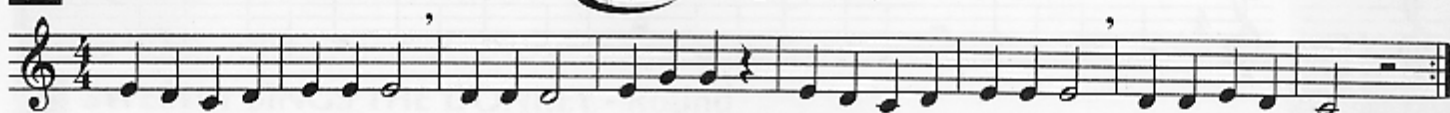


<b>REPEAT SIGN</b>	<b>COMMON TIME</b>	<b>FERMATA</b>	<b>SOLO</b>	One person plays.
			<b>SOLI</b>	Whole section plays.
Repeat from the beginning.	$C = \frac{4}{4}$ Common time means the same as $\frac{4}{4}$ time.	Hold the note or rest longer than its usual value.	<b>TUTTI</b>	Everyone plays.

**23 MERRILY WE ROLL ALONG**  Page 39 

Traditional



► Write in the note names before you play.

**24 LIGHTLY ROW - Duet**

Traditional

**25 ONE STEP AT A TIME**



► Write in the counting and clap the rhythm before you play.

**26 GOOD KING WENCESLAS**

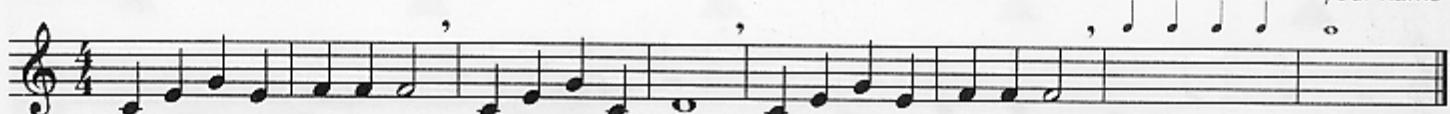
Traditional English Carol

**27 SONG OF THE FJORDS**

Norwegian Folk Song

**28**

Composer \_\_\_\_\_ your name



► Fill in the rest of the measures using the given rhythms and any notes you know. Title and play your composition.

**29 GO FOR EXCELLENCE!** 

